



INDOFINE Chemical Company, Inc.

121 Stryker Lane, Bldg. 30, Suite 1 • Hillsborough, NJ 08844 • U.S.A.

Phone: (908) 359-6778 • FAX: (908) 359-1179

website: www.indofinechemical.com

e-mail: chemical@indofinechemical.com

CERTIFICATE OF ANALYSIS

Catalog Number: 22-311

Product Name: 2,4'-DIMETHOXY-2'-HYDROXYCHALCONE

Lot Number: 000203

Chemical Formula: C₁₇H₁₆O₄

Molecular Weight: 284.32

Melting Point: 92-93°C

Appearance: Yellow powder

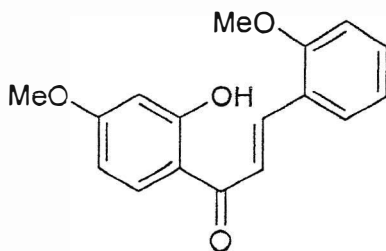
Solubility: Soluble in Chloroform

TLC: Hexane : Ethyl acetate (7:3)

NMR Spectrum: Enclosed (Confirms to the structure)

Storage: Cool dry place

Purity (HPLC): 99.65%





INDOFINE Chemical Company, Inc.

121 Stryker Lane, Bldg. 30, Suite 1 • Hillsborough, NJ 08844 • U.S.A.

Phone: (908) 359-6778 • FAX: (908) 359-1179

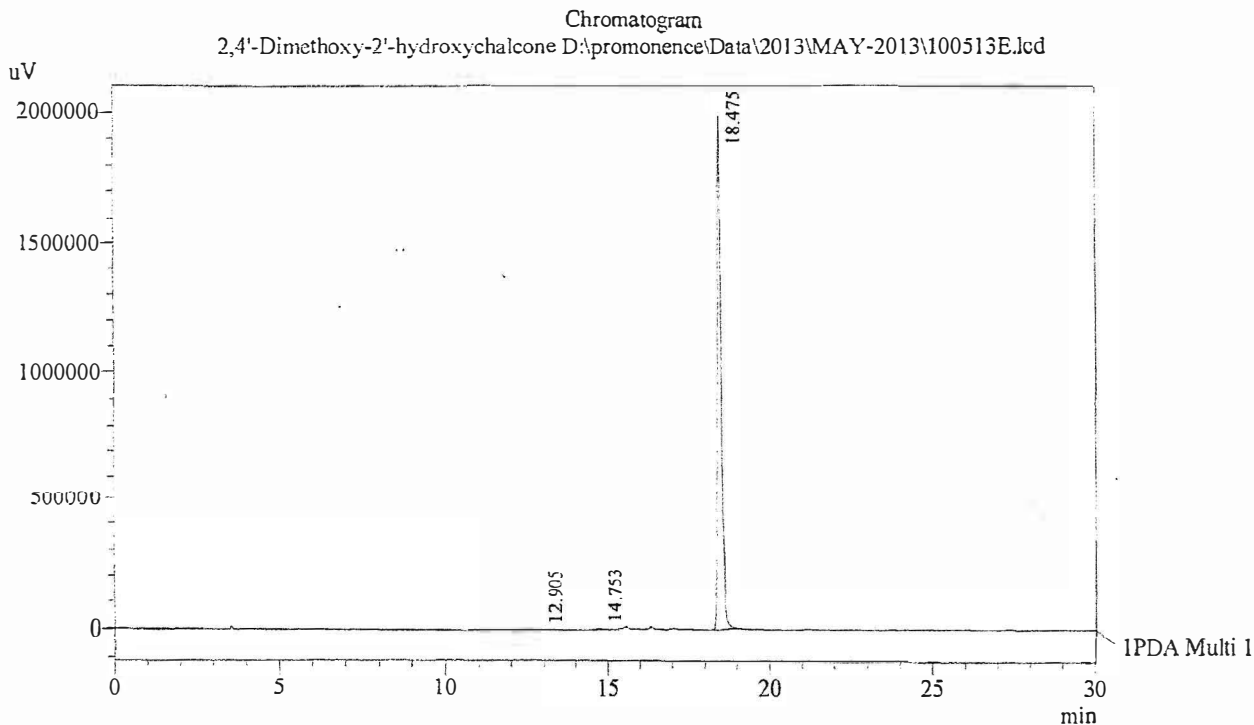
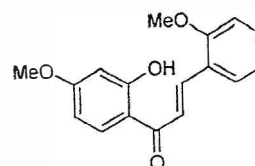
website: www.indofinechemical.com

e-mail: chemical@indofinechemical.com

HPLC ANALYSIS

Acquired by	: Sanjeev	Catalog No.:	22-311
Sample Name	: 2,4'-Dimethoxy-2'-hydroxychalcone	Product name:	2,4'-Dimethoxy-2'-hydroxychalcone
Sample ID	: Lot No:- 000203	Lot No.:	000203
Injection Volume	: 20 uL		
Data Filename	: 100513E.lcd		
Method Filename	: Linear Gradient.M.lcm		

Column	: LUNA C-18(2), (250mm x4.6mm 5.0µ)
Flow	: 1.000 mL/min.
Mobile Phase	: A(Water) B(Acetonitrile)
	0.01 90 10
	12.0 10 90
	20.0 10 90
	23.0 90 10
	30.0 90 10
Diluent	: Acetonitrile



1 PDA Multi 1 / 230nm 4nm

Peak Table

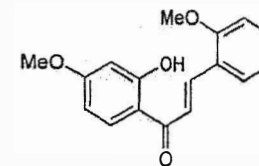
PDA Ch1 230nm 4nm

Peak#	Name	Ret. Time	Area	Area %	Relative Retention Time
1	RT:12.905	12.905	13065	0.09	0.70
2	RT:14.753	14.753	39995	0.26	0.80
3	2,4'-Dimethoxy-2'-OH-chalcone	18.475	15307836	99.65	1.00
Total			15360897	100.00	



INDOFINE Chemical Company, Inc.
121 STRYKER LANE
BLDG. 30, SUITE 1
HILLSBOROUGH, NJ 08844

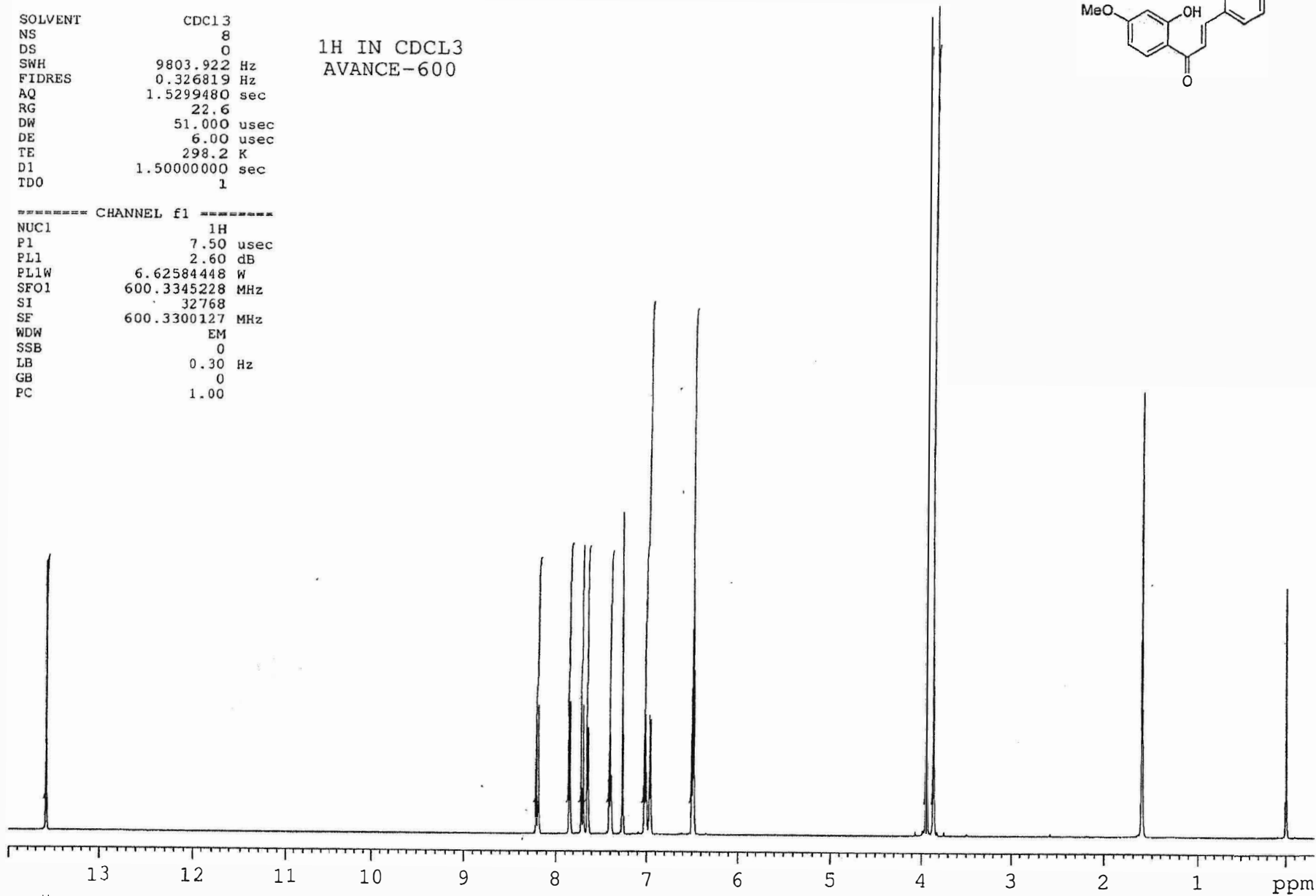
Catalog No.: 22-311
Product name: 2,4'-Dimethoxy-2'-hydroxychalcone
Lot No.: 000203



SOLVENT CDC13
NS 8
DS 0
SWH 9803.922 Hz
FIDRES 0.326819 Hz
AQ 1.5299480 sec
RG 22.6
DW 51.000 usec
DE 6.00 usec
TE 298.2 K
D1 1.50000000 sec
TD0 1

1H IN CDCL3
AVANCE-600

----- CHANNEL f1 -----
NUC1 1H
P1 7.50 usec
PL1 2.60 dB
PL1W 6.62584448 W
SFO1 600.3345228 MHz
SI 32768
SF 600.3300127 MHz
WDW EM
SSB 0
LB 0.30 Hz
GB 0
PC 1.00



1.000

1.004
1.066
1.057
1.054
1.031
2.072
2.042

3.146
3.155

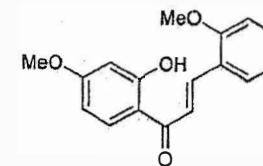
ppm



INDOFINE Chemical Company, Inc.

121 STRYKER LANE
BLDG. 30, SUITE 1
HILLSBOROUGH, NJ 08844

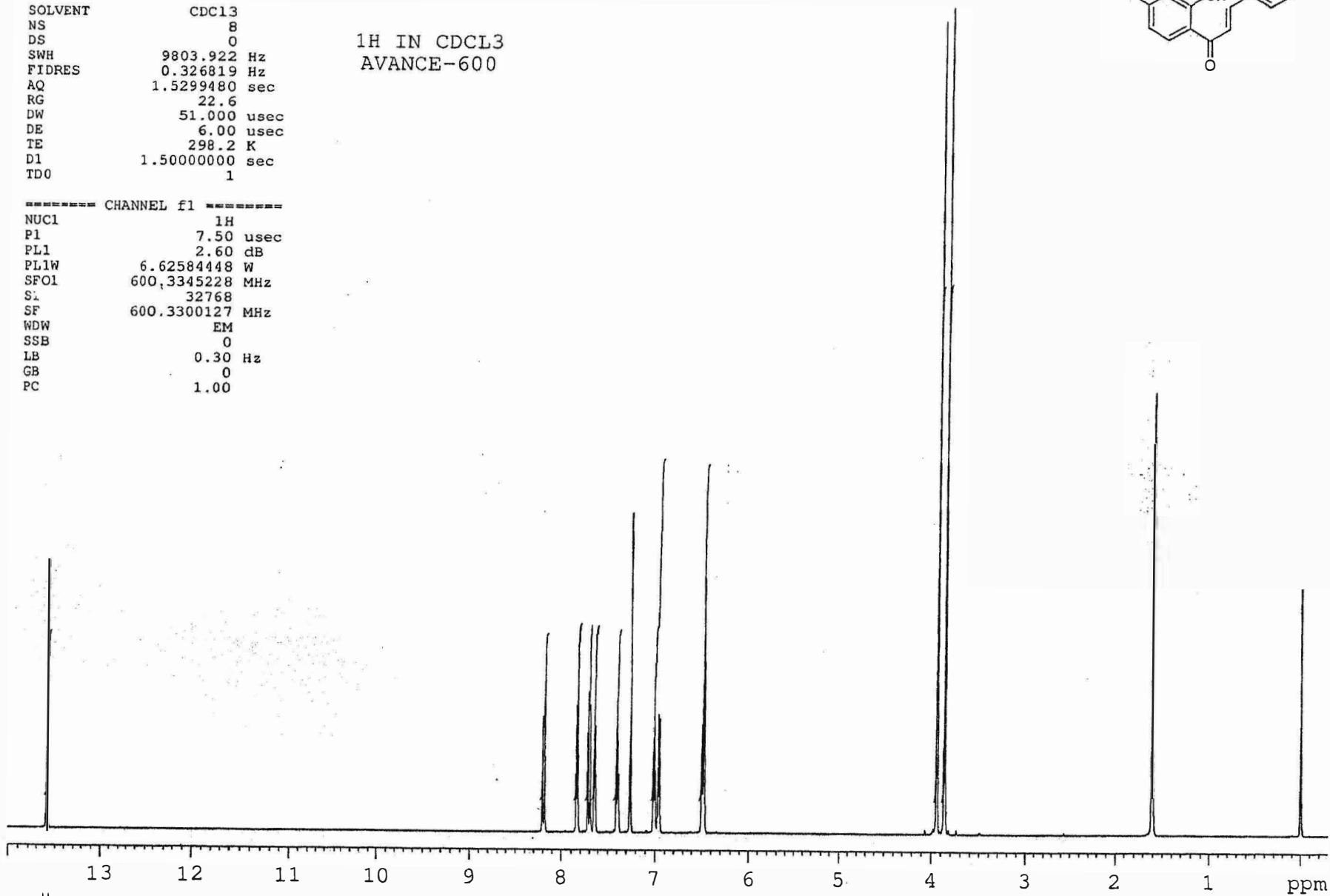
Catalog No.: 22-311
Product name: 2,4'-Dimethoxy-2'-hydroxychalcone
Lot No.: 000203



SOLVENT CDCl3
NS 8
DS 0
SWH 9803.922 Hz
FIDRES 0.326819 Hz
AQ 1.5299480 sec
RG 22.6
DW 51.000 usec
DE 6.00 usec
TE 298.2 K
D1 1.5000000 sec
TD0 1

1H IN CDCl3
AVANCE-600

----- CHANNEL f1 -----
NUC1 1H
P1 7.50 usec
PL1 2.60 dB
PL1W 6.62584448 W
SFO1 600.3345228 MHz
S1 32768
SF 600.3300127 MHz
WDW EM
SSB 0
LB 0.30 Hz
GB 0
PC 1.00



1.000

1.004
1.066
1.057
1.054
1.031
2.072
2.042

3.146
3.155



INDOFINE Chemical Company, Inc.
121 STRYKER LANE
BLDG. 30, SUITE 1
HILLSBOROUGH, NJ 08844



Catalog No.: 22-311
Product name: 2,4'-Dimethoxy-2'-hydroxychalcone
Lot No.: 000203

SOLVENT CDC13
NS 8
DS 0
SWH 9803.922 Hz
FIDRES 0.326819 Hz
AQ 1.5299480 sec
RG 22.6
DW 51.000 usec
DE 6.00 usec
TE 298.2 K
D1 1.50000000 sec
TDO 1

¹H IN CDCL₃
AVANCE-600

----- CHANNEL f1 -----
NUC1 1H
P1 7.50 usec
PL1 2.60 dB
PL1W 6.62584448 W
SFO1 600.3345228 MHz
SI 32768
SF 600.3300127 MHz
WDW EM
SSB 0
LB 0.30 Hz
GB 0
PC 1.00

